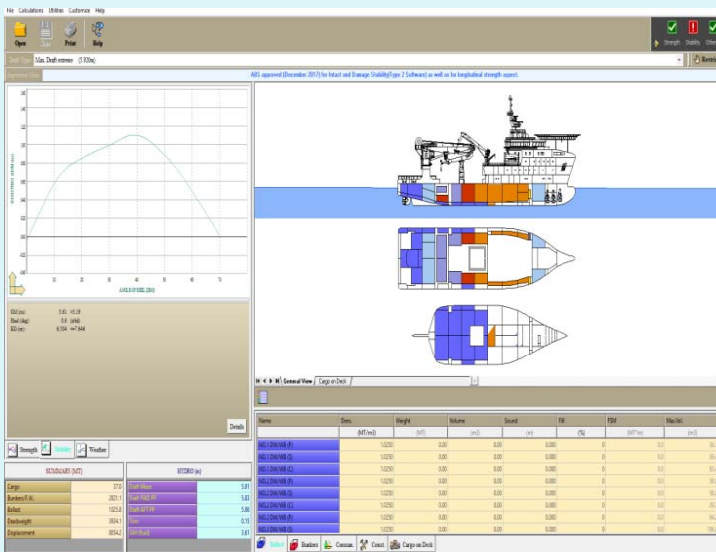


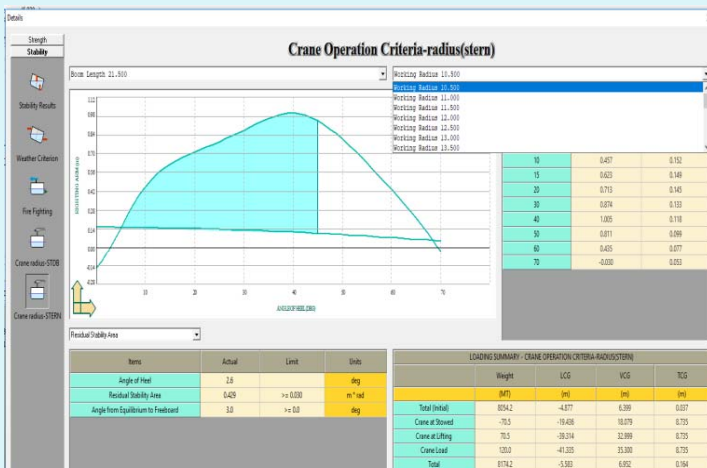
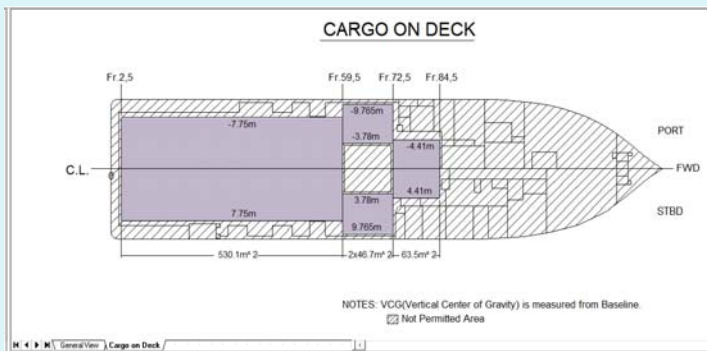
Anchor Handling -Supply Vessel

One screen covers the entire program

Standards functions



- Hydrostatic information table(Draft,trim,LCB...)
- Intact Stability information table-IMO Criteria
- Criteria for Fire Fighting
- Criteria During Anchor Handling
- Criteria for Towing Operation
- Criteria for Crane Operations
- Weather Criteria information table
- Longitudinal Strength calculation table(S.F., B.M)
- Summary of cargoes information table
- Free Cargo on Deck Loading
- Forward draft limit
- Calculation of Propeller immersion
- Load Line selection(Summer, Winter, Tropical...)
- Restrictions(Draft, Trim, S.F., B.M., Air Draft)
- Automatic unit conversion(Metric-British)
- Water density calculation
- Actual loading graph of the vessel
- Deck view of Permitted areas for Deck Loading
- On line help and error/warning messages
- Explorer to manage loading conditions(copy, paste, recycle bin, directories...)
- Import-Export loading conditions
- Reporting facilities(Print out tables and graphs)



Optional utilities for Multi-purpose

- Ballast Water Management module;
- Display and printout Draft Survey Report;
- Auto-Trim module;
- Dead Weight Module;
- Damage Stability Calculation for Offshore Supply Vessel;